

Memorial University Libraries

Health Sciences Library - Wireless Printing Service – MAC OSX

<http://www.library.mun.ca/HSL/guides/MacWirelessPrintingHSL.pdf>

Who can use it?

Anyone who is logged into the MUN wireless network and using Mac OS X.

Where can I use it?

Anywhere that you can make a connection to the MUN wireless network.

Will my job print immediately?

No. Your job will be queued on the Health Sciences Library print release station until you are ready to print it out. You have up to 24 hours to come to the library and print out your job before it is deleted from the print queue.

Where is the printer?

In the photocopy room.

How much does it cost?

The cost is 5¢ per page. You will need your student card in order to pay for your print job.

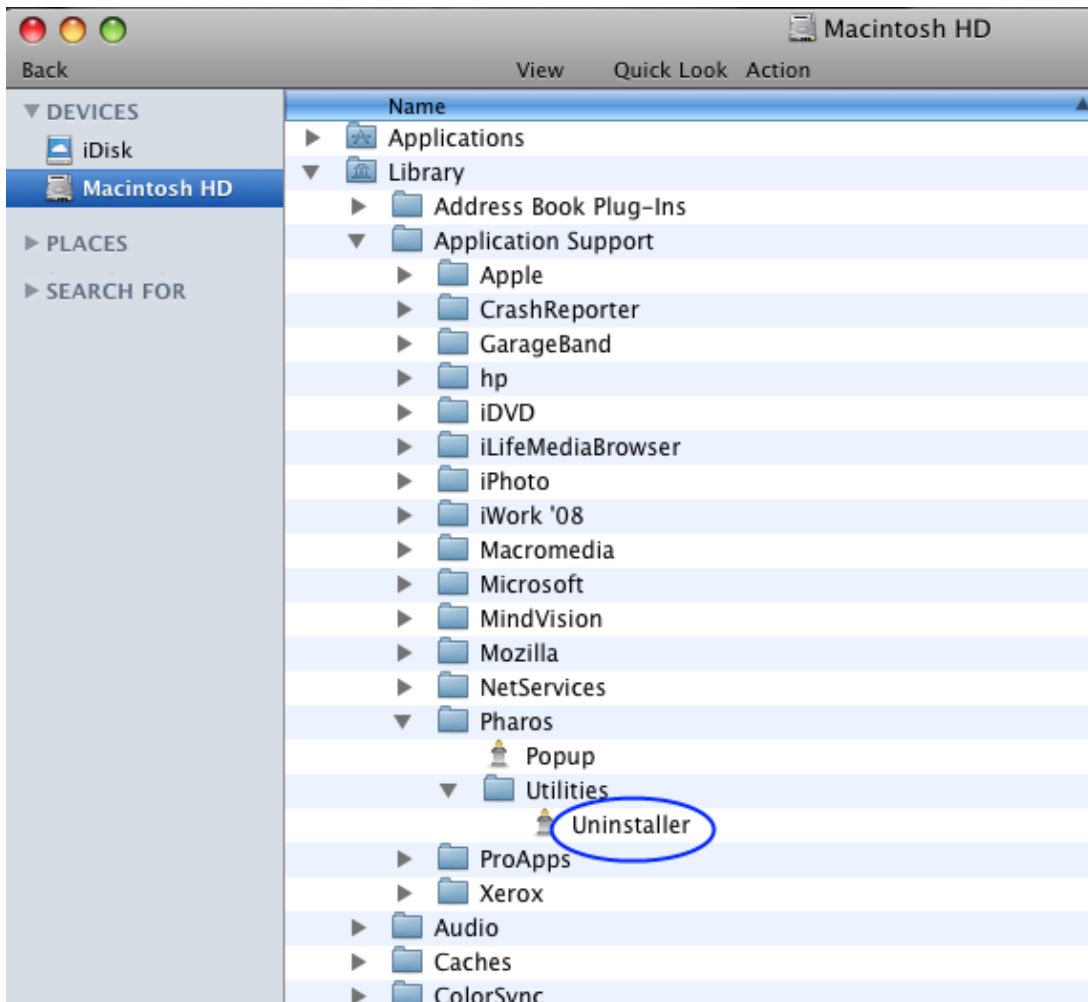
How do I install the service?

You will only need to install the print software once. After this you can send a job to the library printer whenever you wish.

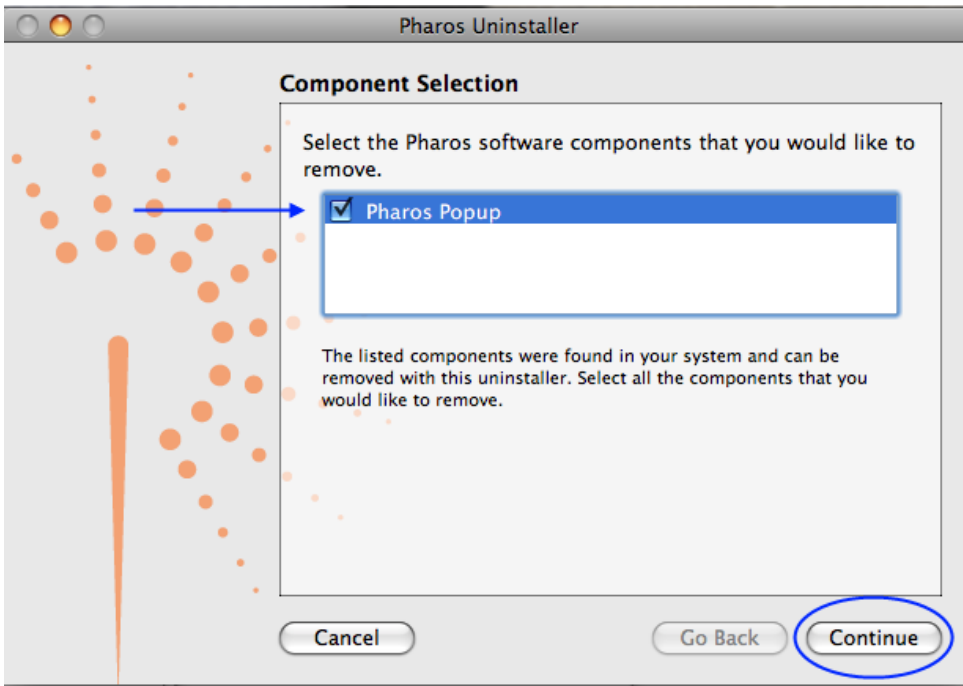
Wireless Printing for Mac OSX In The Health Sciences Library

Steps 1 – 5 are for removing old versions of the Pharos software which may have been installed prior to January 1, 2011. If you have not installed wireless printing on your laptop prior to January 1, 2011 start at step 6.

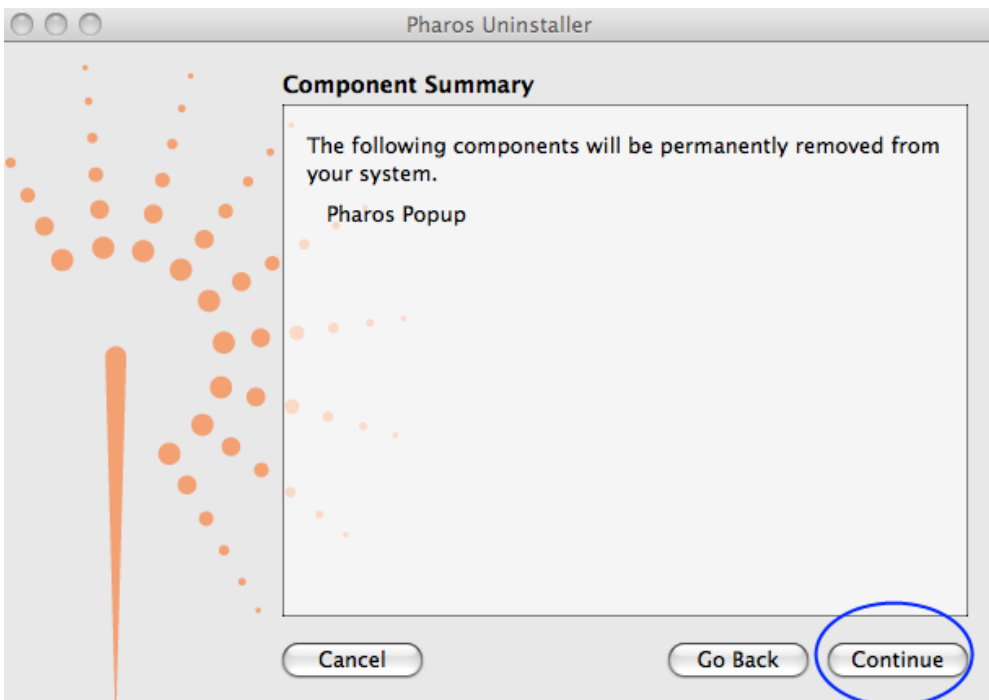
1. Open your Hard drive in Finder and browse to /Library/Application Support/Pharos/Utilities. Double click on the Uninstaller.



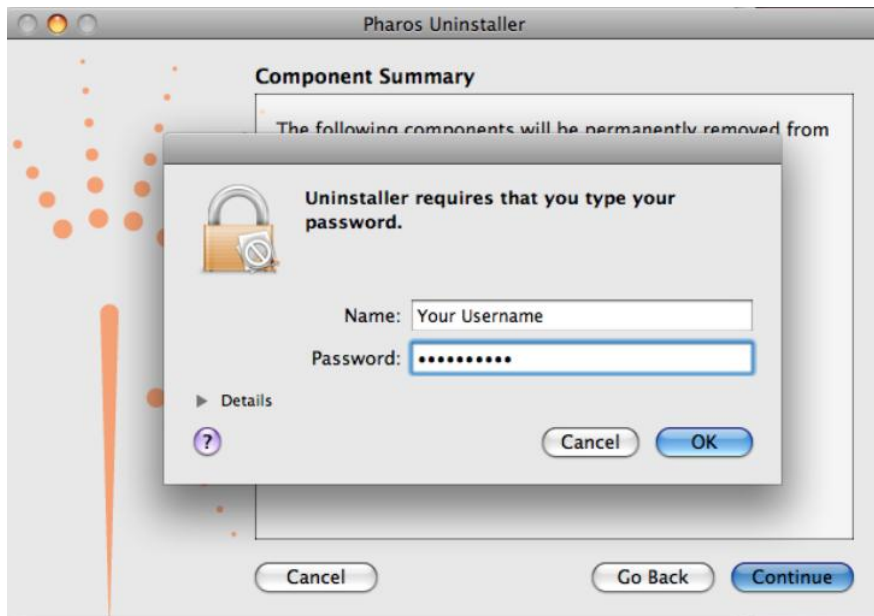
2. You will be prompted with the Component Selection Screen. Tick the box next to Pharos Popup and then click Continue.



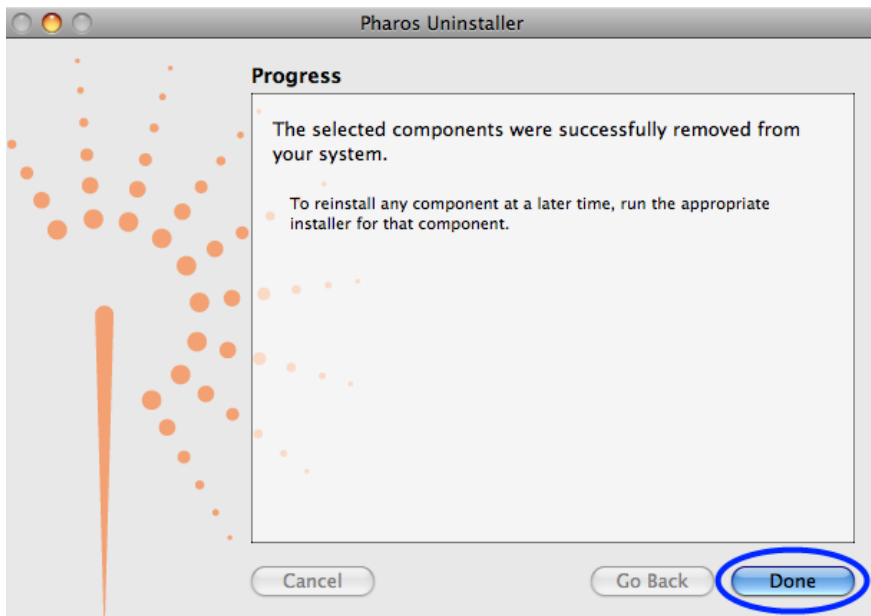
3. Next you will be prompted with the Component Summary Window. Verify that Pharos Popup is listed to be removed and click continue.



4. Next you will be prompted to enter your account username and password and click OK.



5. The next window will verify that the components were uninstalled successfully. Click Done. Pharos has now been removed from your system.



6. To install Pharos Wireless Printing for the Health Sciences Library, open your web browser and enter the following URL in the address bar:

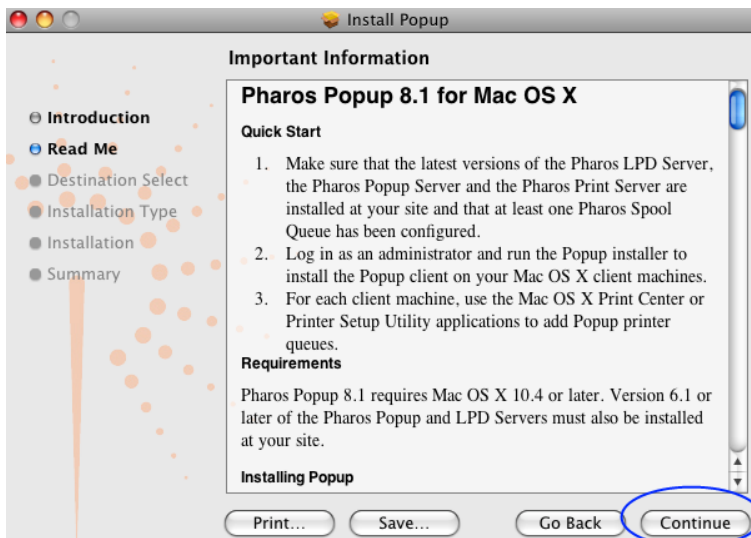
<http://www.library.mun.ca/HSL/wirelessprinting/popup.dmg>

7. Save the file PopUp.dmg. From your download location, click on the file popup.dmg to install pharos.

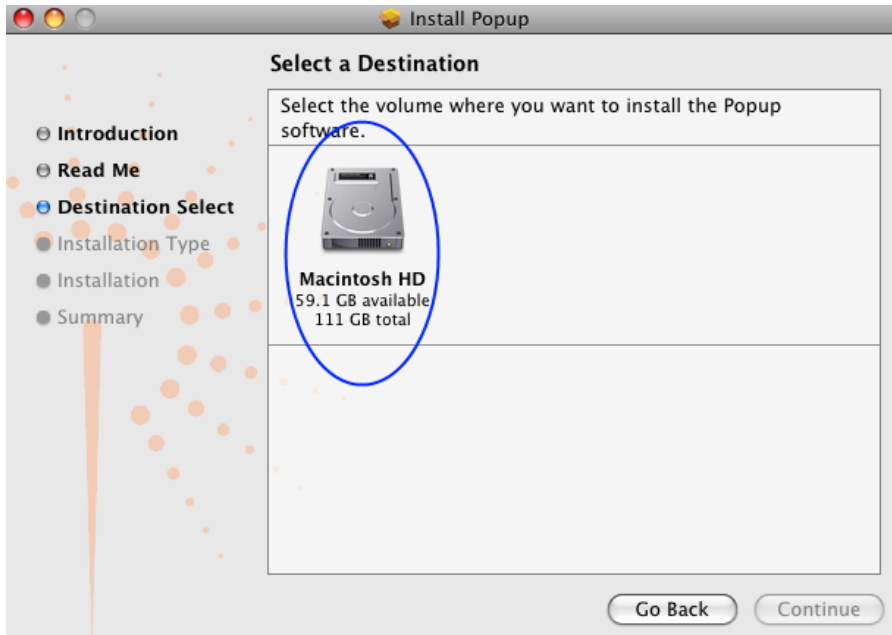
The package will automatically download and begin the install in Safari. (Firefox and other browsers require you to run it from your download location.) Once the installer has started you will see the Install Popup Window. Click Continue.



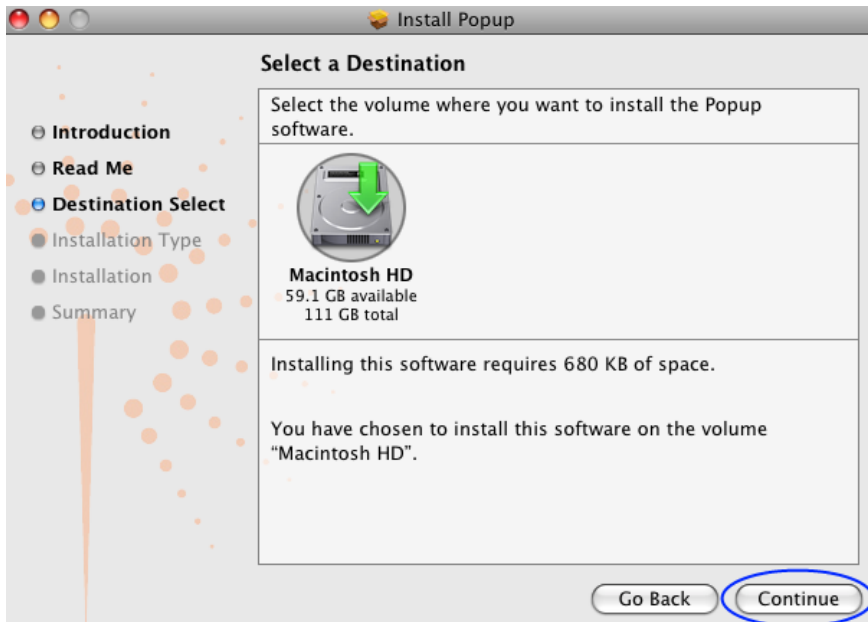
8. Next you will be prompted with the readme screen. Click Continue.



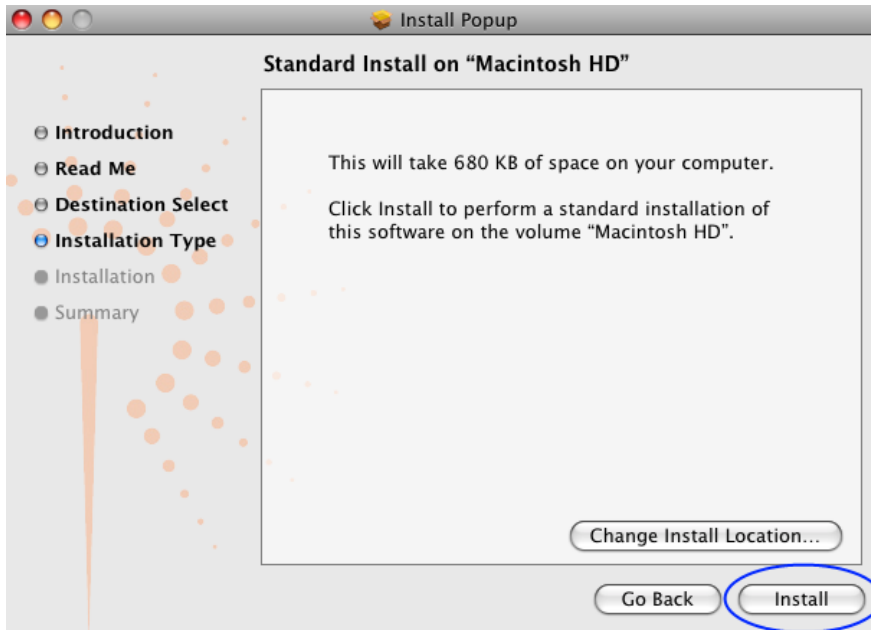
9. Next you need to select a destination for Pharos. Click Macintosh HD.



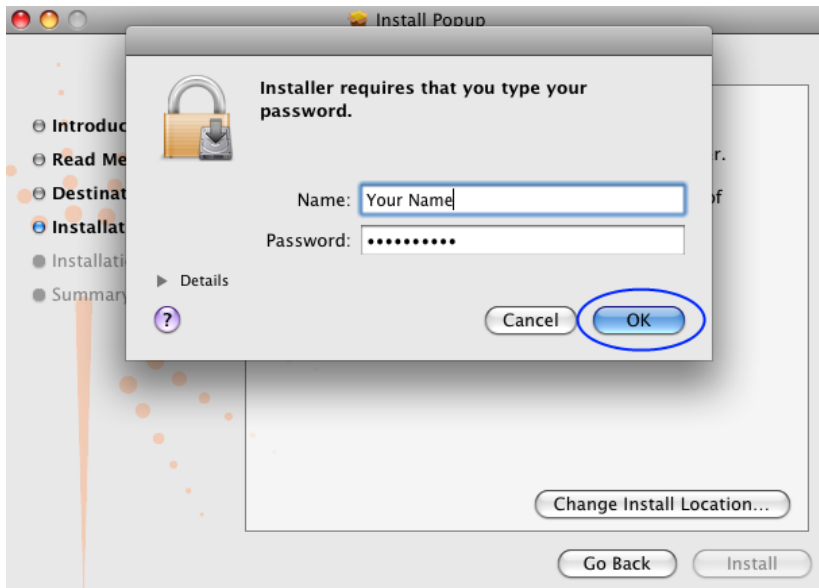
10. Click Continue



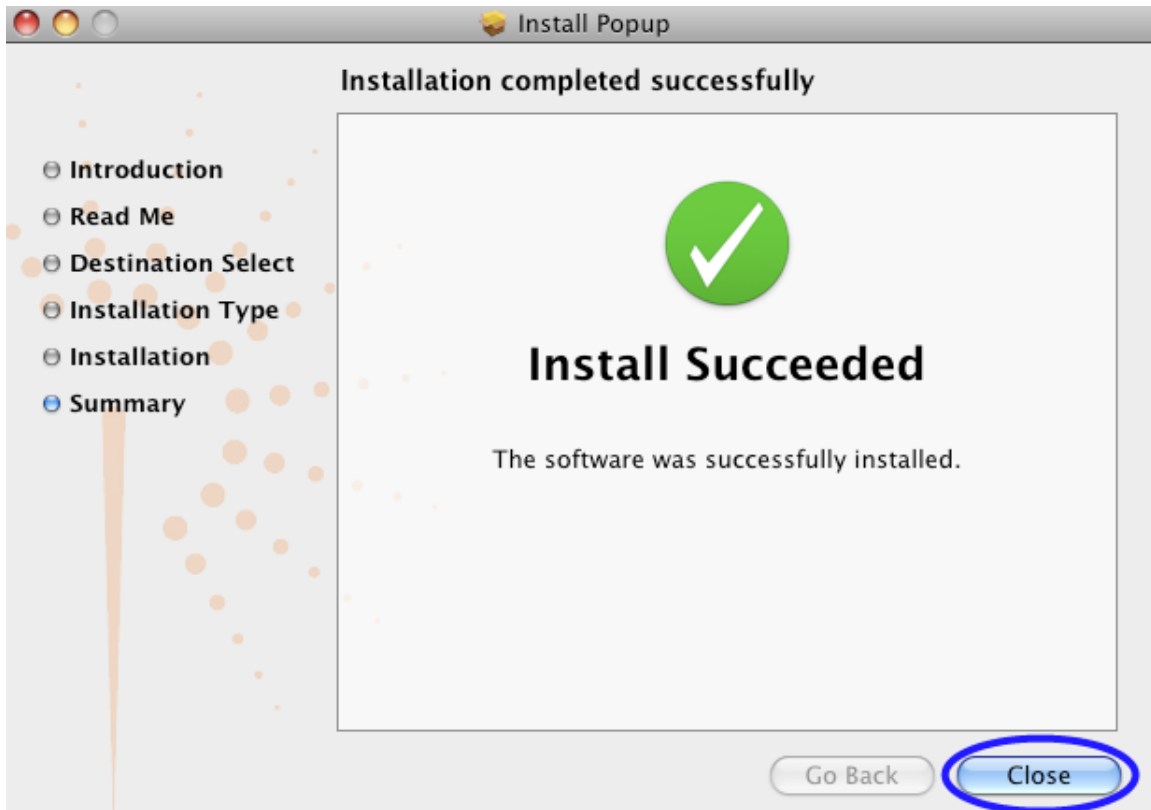
11. Next you will be prompted with the Installation Type Window. Click Install.




12. You will be prompted to enter your account username and password, then click OK.

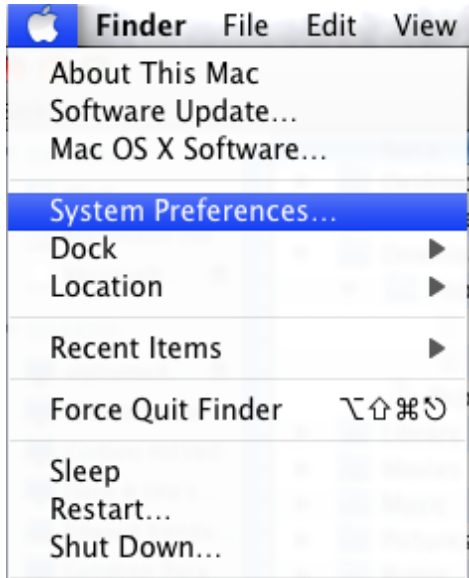


13. The software will install and prompt you with the Summary window when complete. Click Close.




Configuring Popup 8.1 and the Lexmark T562 Printer MacOSX10.5 and MacOSX10.6

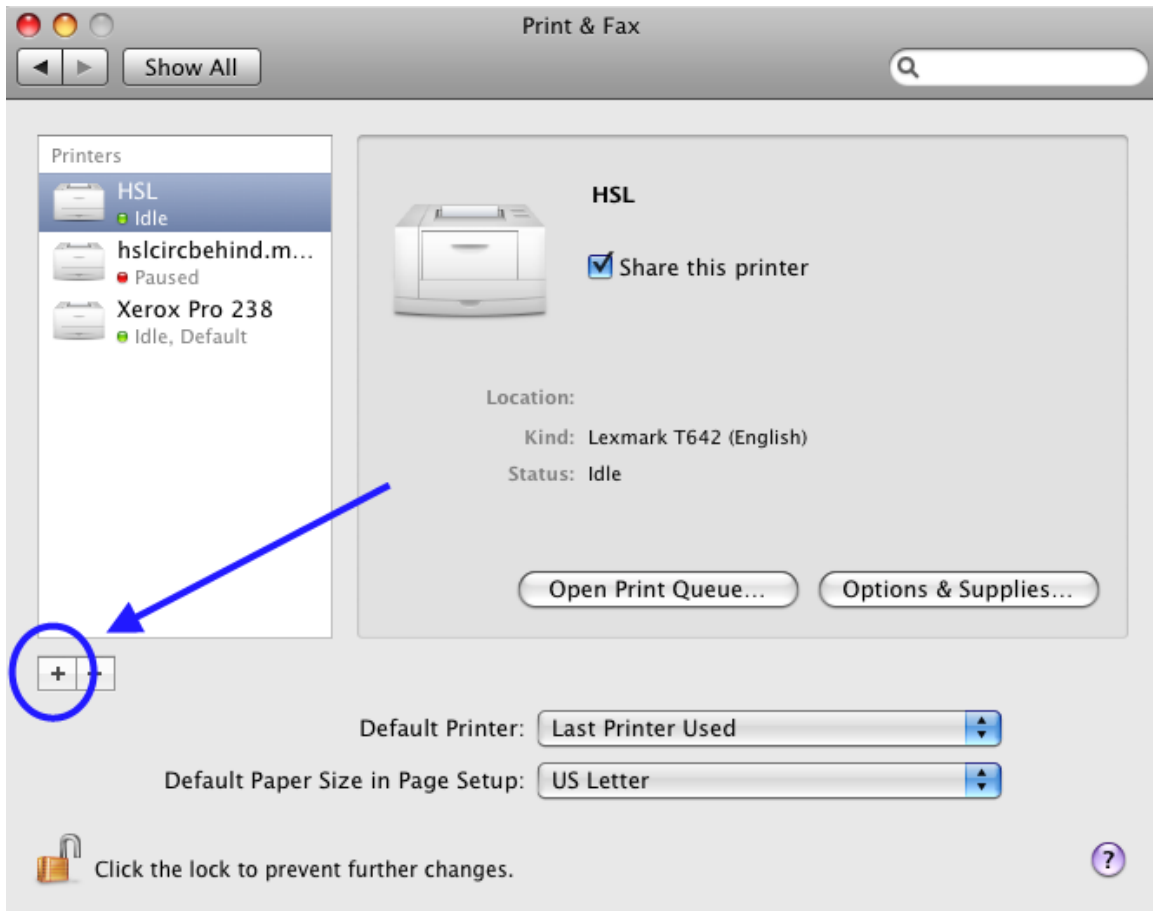
14. Open the  menu and select **System Preferences**.



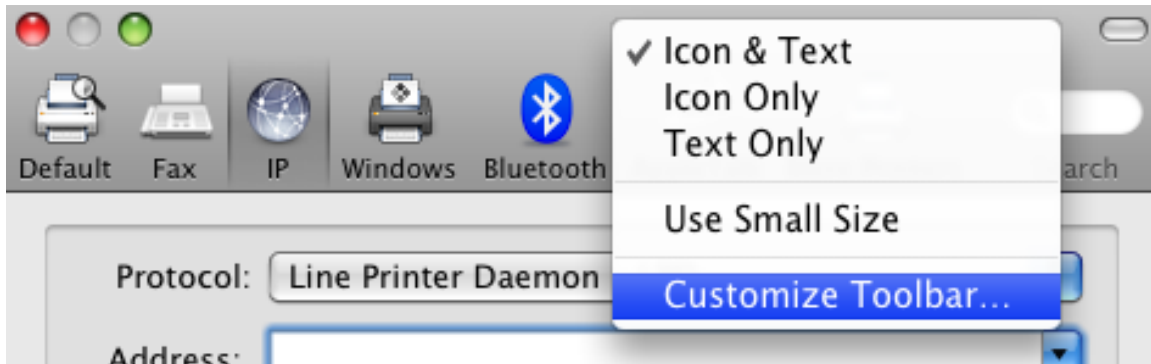
15. Select the **Print & Fax** icon.



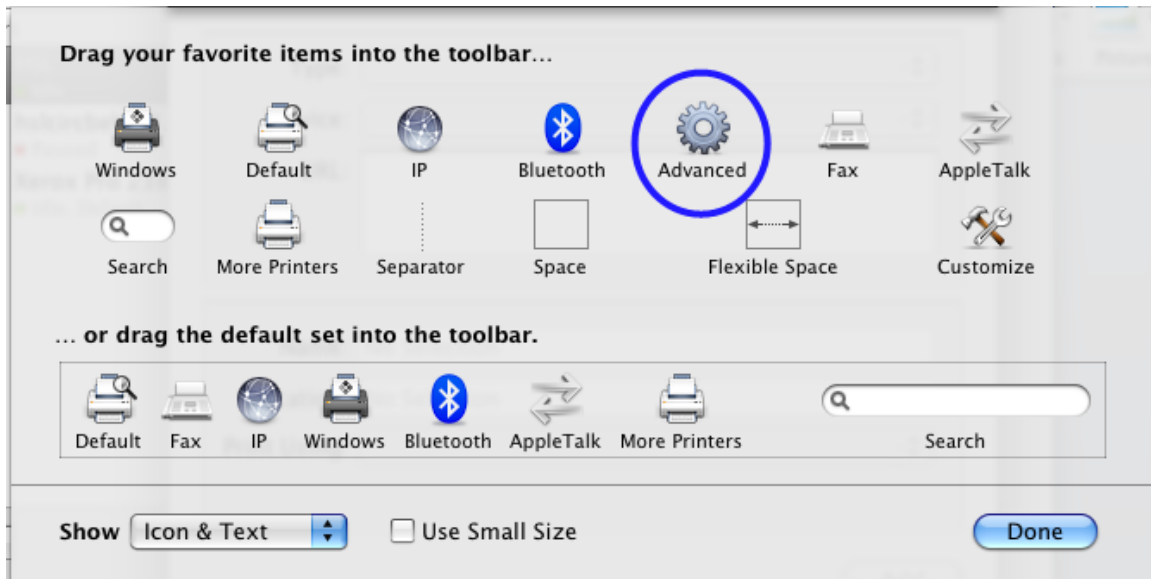
16. Select  from the Print & Fax menu.



17. Hold down the **Control** key on the keyboard and click anywhere on the toolbar. From the popup menu that appears, select **Customize Toolbar...**



18. A menu will appear with the header “Drag your favorite items to the toolbar...” Click and drag the **Advanced** icon to the toolbar. Then click **Done** to close the customization dialog.



The Advanced Icon should now be in the toolbar.

19. Next click Advanced and enter the information listed in Step 20.



20. For **Type** select: Pharos Print Server (Use the drop down menu)

For **URL** enter: popup://134.153.88.5/HSLCOMMONQUEUE

For **Name** enter: HSLCOMMONQUEUE

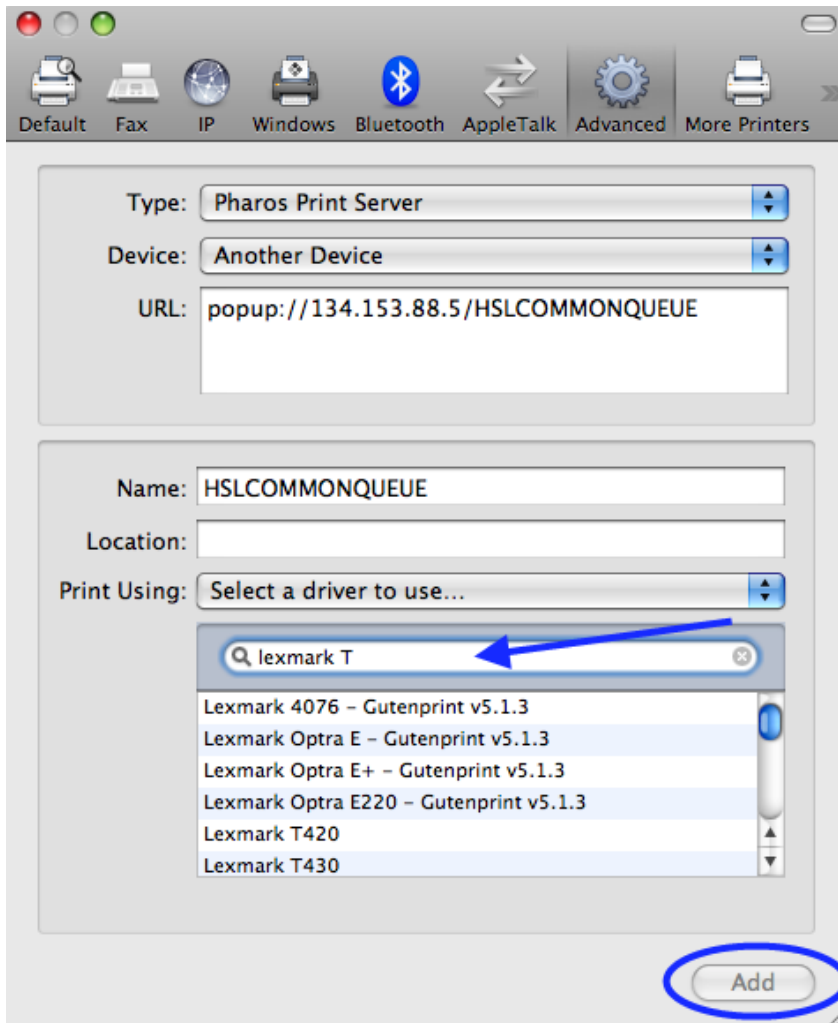
Leave **Location** blank

For **Print Using** select: **Select Printer Software** or **Select a driver to use**

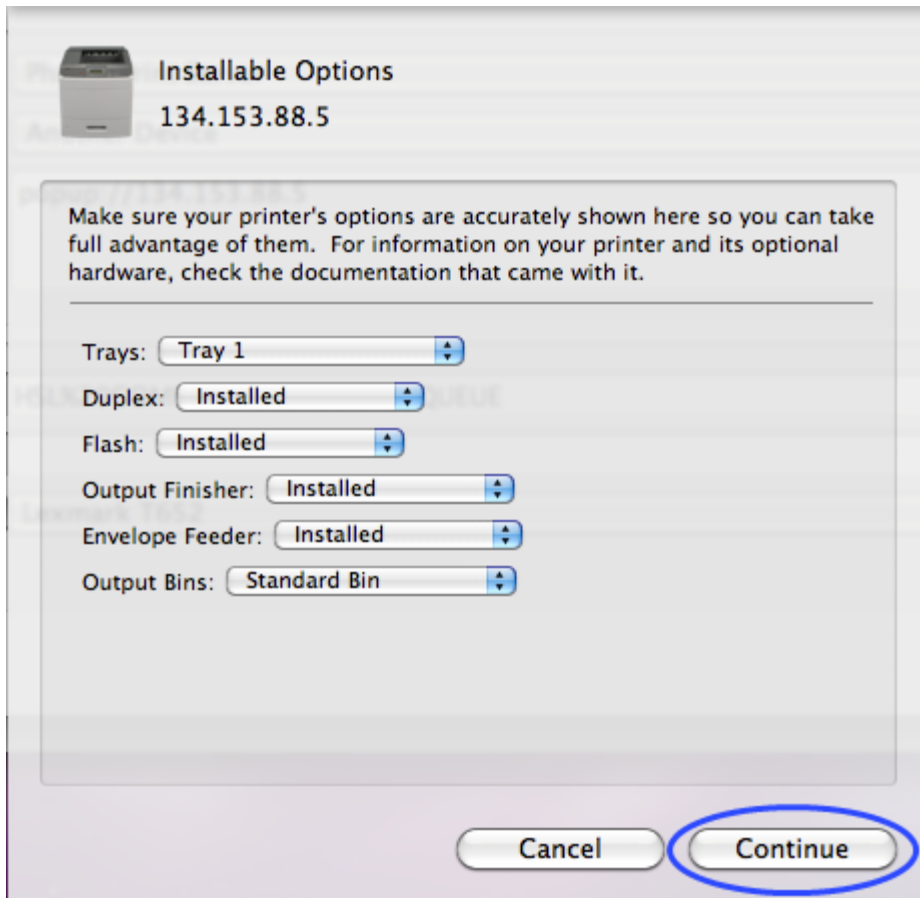
Enter Lexmark T652 into the search box. Highlight the exact matching result.

Click **ADD**.

NOTE: If your Mac does not have the driver for the Lexmark T652 printer you have to go to http://www.library.mun.ca/HSL/wirelessprinting/T652_x.dmg and download the Lexmark T652 driver. Once you have downloaded and installed the Lexmark T652 printer driver repeat steps 14 – 16 and 19 - 20



21. The **Installable Options** menu will appear; its contents should be identical to those in the below screenshot. Click **Continue**



Pharos is now installed on your computer and you are ready to print. You can unmount the Popup 8.1 (2377) image downloaded by clicking the eject button in a finder window or drag the Popup 8.1 (2377) on the desktop to the trash.

Notes

Popup is currently not compatible with the Fast User Switching feature of Mac OS X. Disable Fast User Switching when installing Popup on a client machine. If a firewall is present between the client machine and the Pharos Popup and LPD Servers, the following ports must be opened for traffic for Popup to work properly:

1. Port 515.
2. Port 28203.