

Memorial University Libraries

Wireless Printing Setup – WindowsXP Health Sciences Library

<http://www.library.mun.ca/hsl/guides/WindowsXPWirelessPrintingHSL.pdf>

Health Sciences Library Wireless Printing Service FAQ

Who can use it?

Anyone who is logged into the MUN wireless network.

Where can I use it?

Anywhere that you can make a connection to the MUN wireless network.

Will my job print immediately?

No. Your job will be queued on the print release station until you are ready to print it out. You have up to 24 hours to come to the Health Sciences Library and print out your job before it is deleted from the print queue.

Where is the printer?

In the photocopy room.

How much does it cost?

The cost is 5¢ per page. You will need your student card to pay for your print job.

How do I install the service?

You need to follow this guide step-by-step.

Steps 1-4 are for removing old versions of the Pharos software which may have been installed prior to January 1, 2011. If you have not installed wireless printing on your laptop prior to January 1, 2011, start at step 5.

1. First you must remove all existing Pharos software (If previously installed) From the Start button go to Settings, click on Control Panel, click on Add/Remove programs.

2. Scroll down to find the Pharos Program . Click and remove Pharos.

3. Click “Run Uninstaller”. Click “Next” and follow the on screen instructions (clicking Next).

4. Restart if requested.

Old versions of Pharos should now be uninstalled.

How to install Health Sciences Library wireless printing for Windows XP

5. Next you need to download and install the newest version of Pharos, our wireless printing software.

Open Internet Explorer and type in the following URL:

http://www.library.mun.ca/HSL/wirelessprinting/HSLABSRV_HSLCommonSpoolQueue_for_Lte.exe

6. Select **Save**



7. You will be prompted to specify a location where you want to save the file you are about to download. It does not matter; but just remember where you save it.

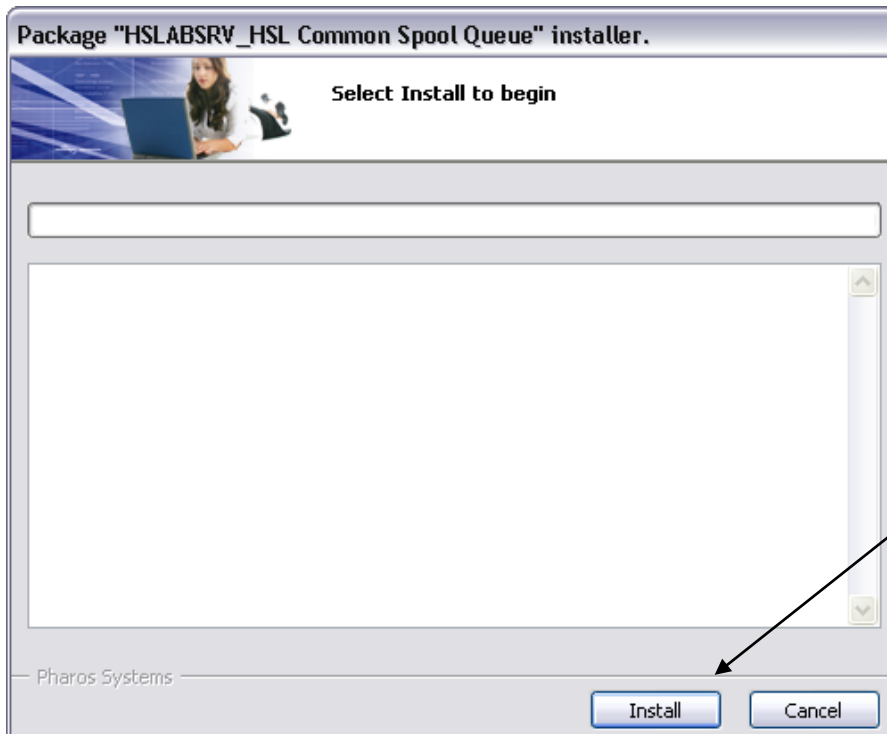
Once the file (HSLABSRV_HSLCommonSpoolQueue_for_Lte.exe) is downloaded;

Click the file icon to start installing the software.

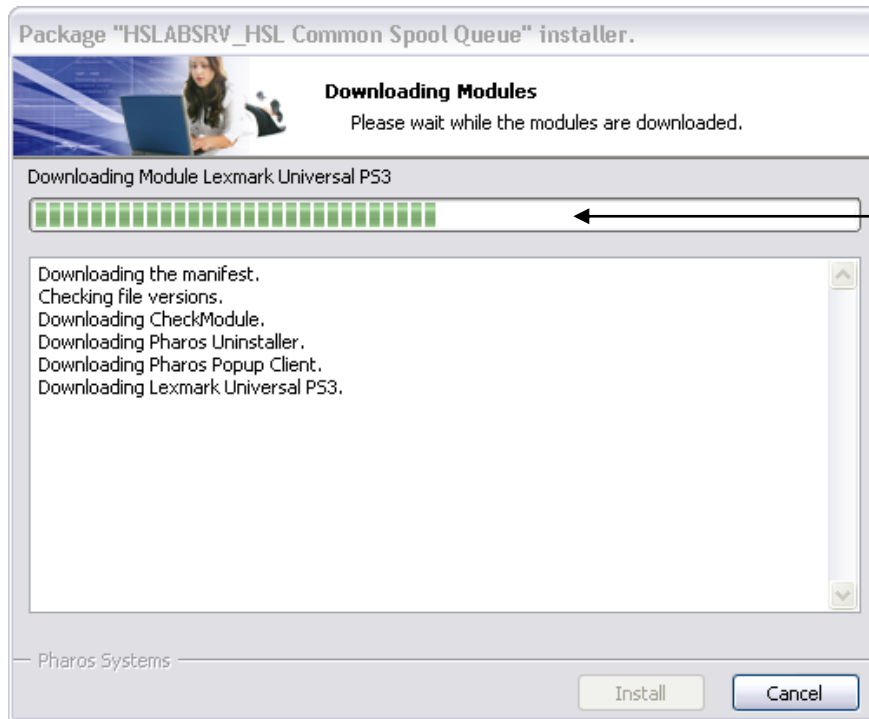
8. Select **Run**



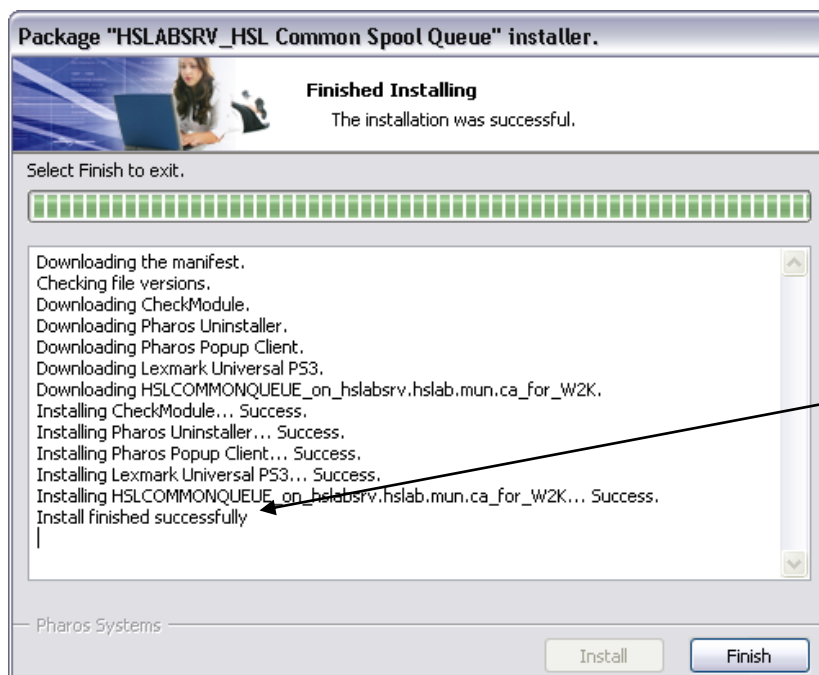
9. Select **Install** option to continue



10. You will see the installer window go through a series of installs of the different modules. Just follow the progress bar on top.



11. Wait until you get a successful message "Install finished successfully" then click **Finish**.



You can now print to the HSL printer. Click here for print instructions
<http://www.library.mun.ca/hsl/guides/Printing@HSL.pdf>

January 17, 2011